



**USER MANUAL – EN**  
**IN 9360 Spinning Bike inSPORTline Airin**



# CONTENTS

|   |    |
|---|----|
| IMPORTANT SAFETY INSTRUCTIONS.....                      | 3  |
| ASSEMBLY .....  | 4  |
| HOW TO ADJUST THE RESISTANCE .....                      | 10 |
| HOW TO STOP THE BIKE IMMEDIATELY .....                  | 10 |
| PARTS LIST.....   | 10 |
| EXPLODED VIEW .....                                     | 13 |
| TERMS AND CONDITIONS OF WARRANTY, WARRANTY CLAIMS ..... | 14 |

## IMPORTANT SAFETY INSTRUCTIONS

**WARNING!** To reduce the risk of serious injury, read the following important precautions before using the Spin Bike.

- Read all instructions and warnings in this manual before using the Spin bike.
- Before using this spin bike, please consult your physician for a complete physical examination. If you feel any discomfort while exercising, please stop immediately and consult your doctor.
- Keep the Spin bike indoors, away from moisture and dust. Place the Spin bike on a level surface, with a mat beneath it to protect the floor or carpet. Make sure that there is enough clearance around the Spin bike to mount, dismount, and use it.
- Inspect and properly tighten all parts regularly. Replace any worn parts immediately.
- Ensure that your fingers or clothing do not catch in the Spin bike moving parts.
- Please keep children and pets away from the Spin bike at all times. It is only suitable for adults.
- The Spin bike should not be used by persons weighting more than 150 kg. Serious injury may occur if the user's weight exceeds the limit shown here.
- To prevent injuring you when lifting and moving the machine, Please getting someone to help you.
- If you hear unusual noise when exercising, please stop your training immediately. Do not use the Spin bike until the problem has been resolved.
- To prevent injuring you when stop exercising, do not touch the flywheel immediately.

## ASSEMBLY

**Assembly requires two persons.** Place all parts of the Spin bike in a cleared area and remove the packing materials. Do not dispose of the packing materials until assembly is completed.

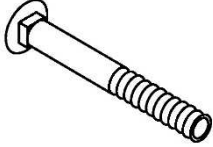

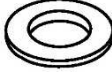
For your convenience, we have identified the hardware used in the assembly of this product. This chart is provided to help you identify those items that may be unfamiliar to you.

**NOTE: Some small parts may have been preassembled. If a part is not in the parts bag, check to see if it has been preassembled.**

| No. | Description               | Qty |  |
|-----|---------------------------|-----|--|
| 22  | L-knob M10x20mm           | 1   |  |
| 23  | Knob M10x28mm             | 1   |  |
| 24  | Lock nut M10              | 1   |  |
| 25  | Washer 19.5x38x2T         | 1   |  |
| 35  | Cap nut M10               | 4   |  |
| 36  | Carriage bolt M10x55mm    | 4   |  |
| 37  | Washer 10x19x1.5T         | 4   |  |
| 46  | Washer 10x29x2T           | 2   |  |
| A   | Spanner (13, 15)          | 1   |  |
| B   | Spanner (14, 17)          | 1   |  |
| C   | Multi wrench (13, 14, 15) | 1   |  |
|     |                           |     |  |
|     |                           |     |  |

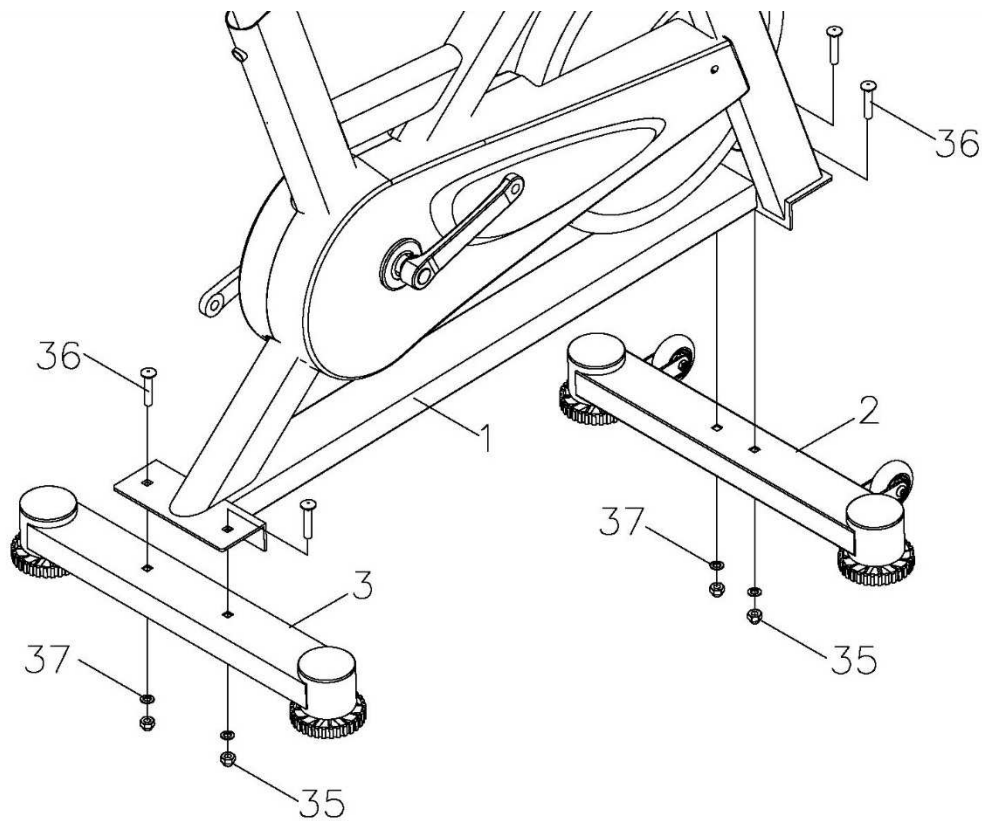
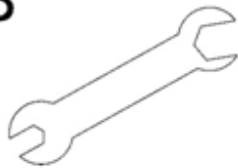
## STEP 1: Front / Rear Stabilizers Installation

### Hardware:

|   |   |   |
|---|---|---|
|  |  |  |
| (36) Carriage bolt, 4 PCS   | (35) Cap nut, 4 PCS   | (37) Washer, 4 PCS  |

### Tool:

B


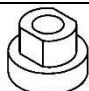
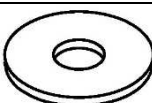



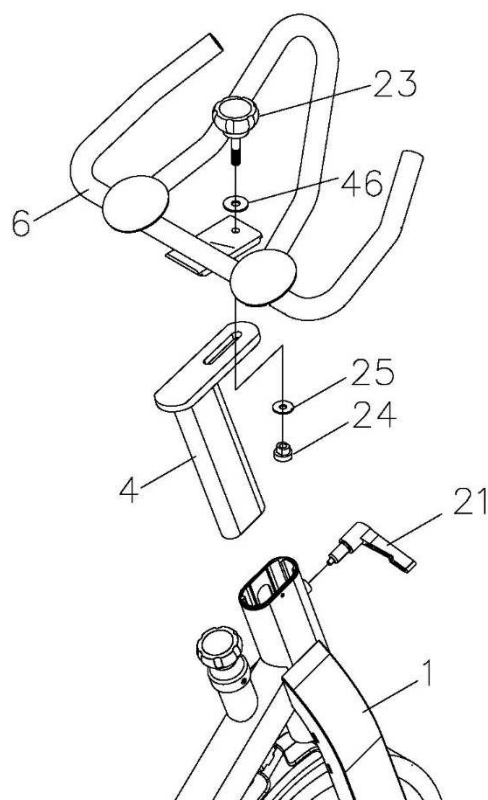
While another person lifts the front of Frame (1), attach the Front stabilizer (2) to the Frame with two M10x55mm Carriage bolts (36) from the above Stabilizer, and fix it with two 10x19x1.5mm Washers (37) & two M10 Cap nuts (35).

Do the same to the Rear Stabilizer (3).

## STEP 2: Handlebar Installation

### Hardware:

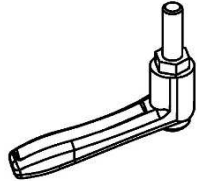
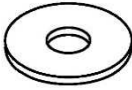
|   |   |  |   |
|---|---|--|---|
|  |  |  |  |
| (23) Knob M10x28mm, 1 PC  | (24) Lock nut M10, 1 PC   | (25) Washer 19.5x38x2mm, 1 PC  | (46) Washer 10x29x2mm, 1 PC   |



Release the Spring knob (21), then insert the Upright post (4) into the Frame (1). There are 5 holes on the Upright post (4), please select the desired position and tighten the Spring knob (21). Next connect the Handlebar (6) with the Upright post (4), select the desired position and fix it with one M10x28mm Knob (23), one 10x29x2mm Washer (46), one 19.5x38x2mm Washer (25) and M10 Lock nut (24).

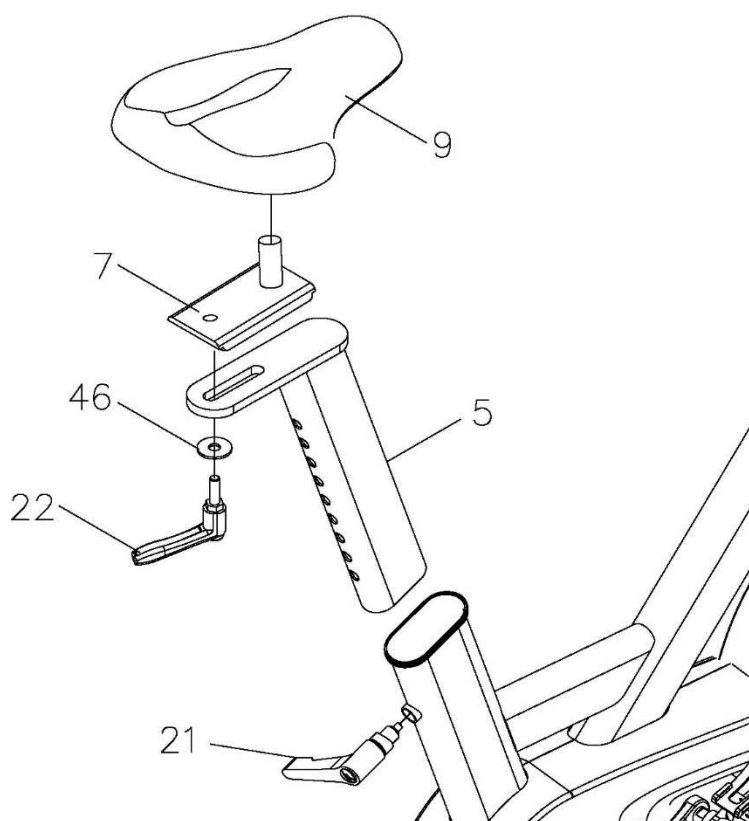
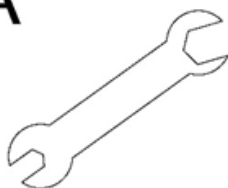
### STEP 3: Seat Post / Seat Installation

#### Hardware:

|   |   |
|---|---|
|  |  |
| (22) L-knob M10, 1 PC   | (46) Washer 10x29x2mm, 1 PC   |

#### Tool:

A

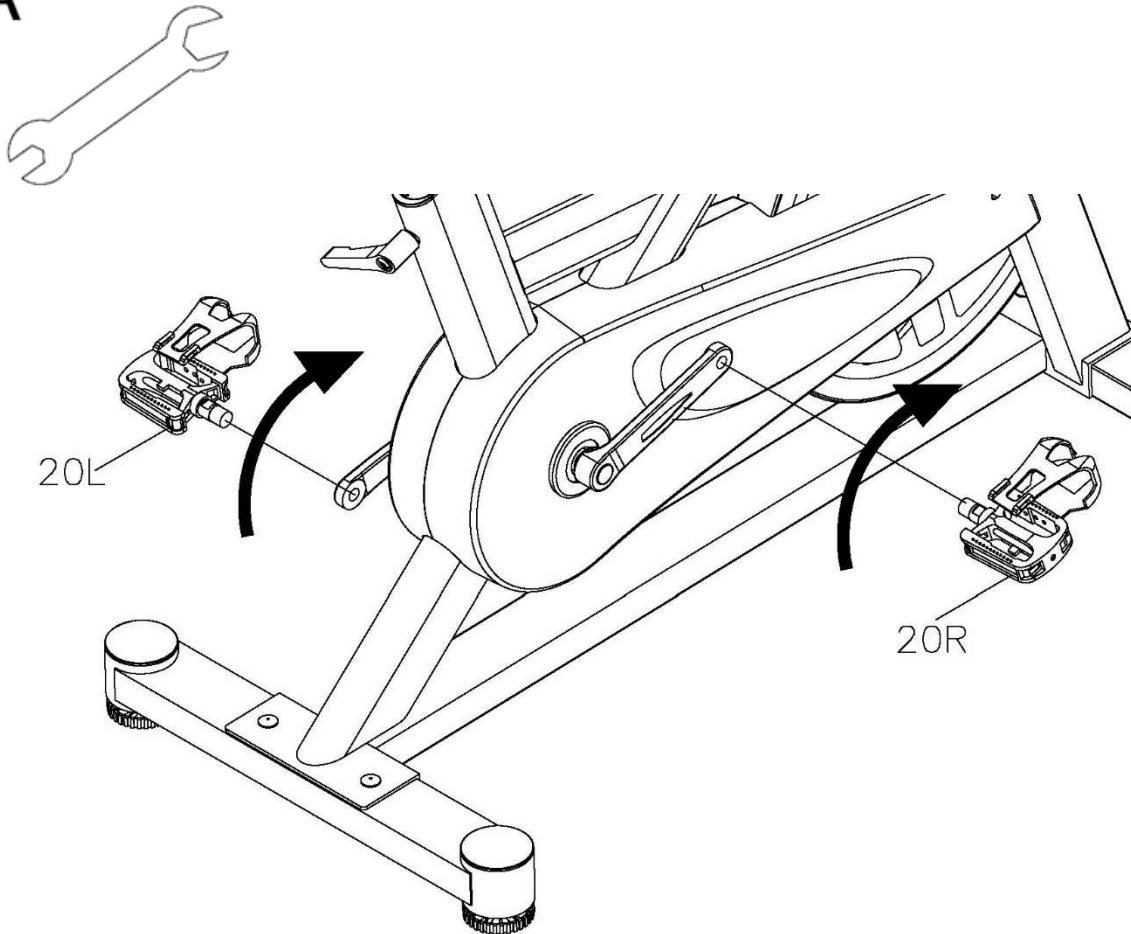


Release the Spring knob (21), then insert the Seat post (5) into the Frame (1). There are 9 holes on the Seat post (5), please select the desired position and tighten the Spring knob (21). Next attach the Seat (9) to the Moving bracket (7), then connect the Moving bracket (7) with the Seat post (5), select the desired position and fix it with one M10 L-knob (22) & one 10x29x2 mm Washer (46).

#### STEP 4: R / L Pedals Installation

Tool:

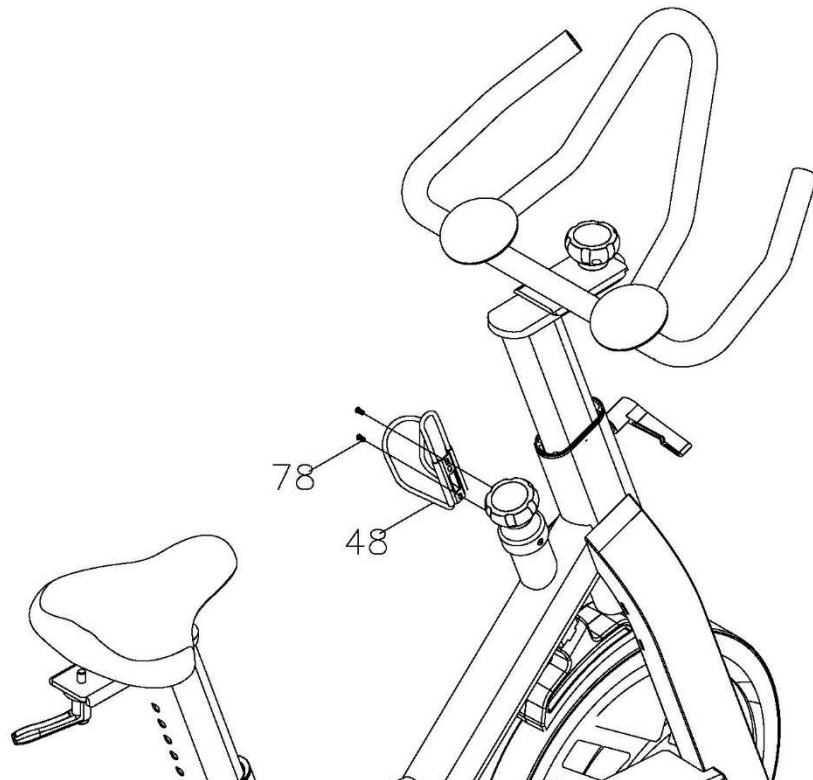
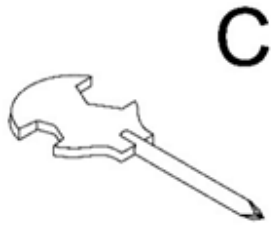
A



Screw R/L pedals (20) onto crank (18). The pedals are marked with R and L at the screw. Tighten the left pedal counter-clockwise, the right pedal clockwise.

## STEP 5: Bottle Holder Installation

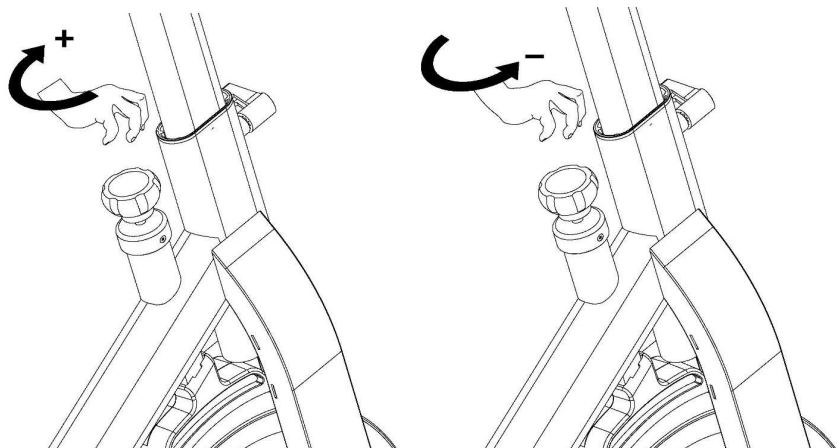
Tool:



Release two M5x15mm Bolts (78) from the Frame (1), then put the Bottle holder (48) onto the Frame (1) and re-lock two Bolts (78).

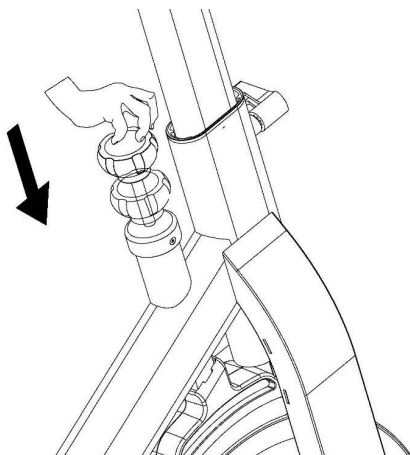
## HOW TO ADJUST THE RESISTANCE

Clockwise rotate the knob to increase the resistance, and counter-clockwise rotate the knob to decrease the resistance as below images.



## HOW TO STOP THE BIKE IMMEDIATELY

When you want to stop the bike in training, please push down the knob as below image.



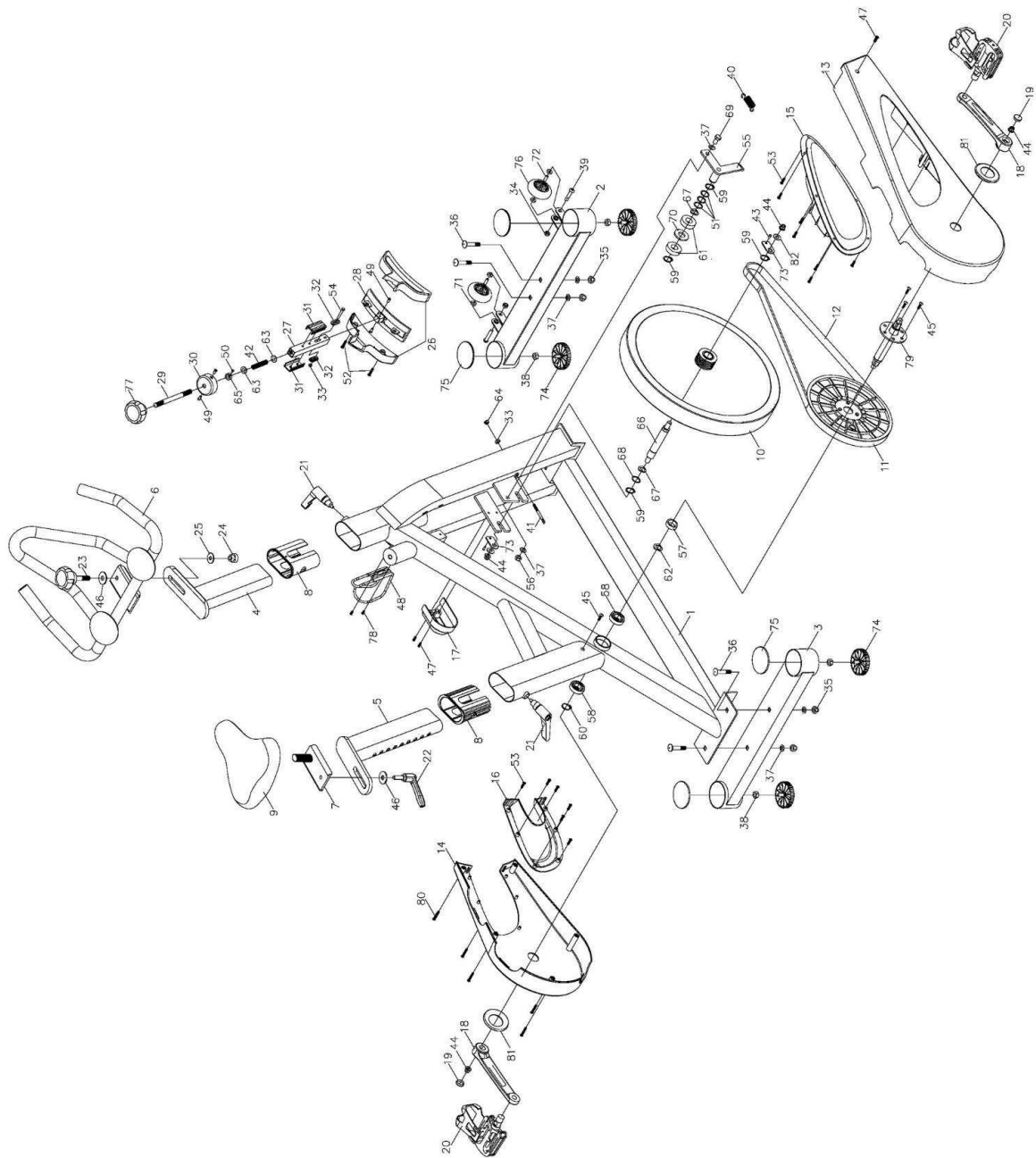
## PARTS LIST

| No. | Description                     | Qty | Unit |
|-----|---------------------------------|-----|------|
| 1   | Main Frame                      | 1   | pc   |
| 2   | Front stabilizer bar 40x80x2T   | 1   | pc   |
| 3   | Rear stabilizer bar 40x80x2T    | 1   | pc   |
| 4   | Upright post 40x80x2T           | 1   | pc   |
| 5   | Seat post 40x80x2T              | 1   | pc   |
| 6   | Handlebar $\Phi 25.4 \times 2T$ | 1   | pc   |
| 7   | Moving bracket                  | 1   | pc   |
| 8   | Plastic fastener 50x100x100mm   | 2   | pc   |
| 9   | Seat VL-6100                    | 1   | pc   |
| 10  | Flywheel $\Phi 468$             | 1   | pc   |

|    |                            |   |     |
|----|----------------------------|---|-----|
| 11 | Belt wheel Φ260            | 1 | pc  |
| 12 | Belt 1590 PK5              | 1 | pc  |
| 13 | Main chain cover-R         | 1 | pc  |
| 14 | Main chain cover-L         | 1 | pc  |
| 15 | Inner chain cover-R        | 1 | pc  |
| 16 | Inner chain cover-L        | 1 | pc  |
| 17 | Side trim cover            | 1 | pc  |
| 18 | 3PCS Crank                 | 1 | set |
| 19 | Plastic cap for Crank      | 2 | pc  |
| 20 | Pedal JD-304V              | 1 | set |
| 21 | Spring knob M16x26         | 2 | pc  |
| 22 | L-knob M10x20              | 1 | pc  |
| 23 | Knob M10x28                | 1 | pc  |
| 24 | Lock nut M10               | 1 | pc  |
| 25 | Washer 19.5x38x2T          | 1 | pc  |
| 26 | Magnet plastic cover       | 1 | set |
| 27 | Support bar 20x20x1.4T     | 1 | pc  |
| 28 | Magnet bracket             | 1 | pc  |
| 29 | Tension control bar        | 1 | pc  |
| 30 | Fixed cover                | 1 | pc  |
| 31 | Π shape fastener           | 2 | pc  |
| 32 | Oval shape fastener        | 2 | pc  |
| 33 | Nylon nut M6               | 2 | pc  |
| 34 | Nylon nut M8               | 2 | pc  |
| 35 | Cap nut M10                | 4 | pc  |
| 36 | Carriage bolt M10x55       | 4 | pc  |
| 37 | Washer 10x19x1.5T          | 5 | pc  |
| 38 | Hex nut M10x6T             | 4 | pc  |
| 39 | Hex socket head bolt M8x38 | 2 | pc  |
| 40 | Spring Φ2.6x18             | 1 | pc  |
| 41 | Adjustment bar Φ6x60       | 1 | pc  |
| 42 | Compressed spring Φ1.5x9   | 1 | pc  |
| 43 | Screw M5x12                | 2 | pc  |
| 44 | Flange nut M12x1.5x10.4T   | 4 | pc  |
| 45 | Hex socket head bolt M8x15 | 4 | pc  |
| 46 | Washer 10x29x2T            | 2 | pc  |
| 47 | Self-tapping screw M5x12   | 3 | pc  |
| 48 | Bottle holder              | 1 | pc  |

|    |  |    |    |
|----|--|----|----|
| 49 | Screw M5x10  | 4  | pc |
| 50 | Philips screw M3x10                                  | 1  | pc |
| 51 | Washer 20.5x25x1T                                    | 3  | pc |
| 52 | Self-tapping screw M4.5x15                           | 2  | pc |
| 53 | Self-tapping screw M4.2x10                           | 17 | pc |
| 54 | Hex bolt M6x35                                       | 1  | pc |
| 55 | Idle wheel fixture                                   | 1  | pc |
| 56 | Nylon nut M10x6T                                     | 1  | pc |
| 57 | Steel sleeve $\Phi 25.1 \times 32 \times 10$ T       | 1  | pc |
| 58 | Steel bearing 6005-2RS                               | 2  | pc |
| 59 | C-ring $\Phi 20$                                     | 4  | pc |
| 60 | C-ring $\Phi 25$                                     | 1  | pc |
| 61 | Steel bearing 6004-2RS                               | 2  | pc |
| 62 | Wave washer 27x34x0.3T                               | 1  | pc |
| 63 | Plastic washer 10x20x2T                              | 2  | pc |
| 64 | Wire plug $\Phi 17$                                  | 6  | pc |
| 65 | Steel sleeve $\Phi 10.2 \times 15 \times 6$ T        | 1  | pc |
| 66 | Axis $\Phi 20 \times 155$ mm                         | 1  | pc |
| 67 | Wave washer 21x27x0.3T                               | 2  | pc |
| 68 | Washer 20.5x25x0.5T                                  | 1  | pc |
| 69 | Hex bolt M10x20                                      | 1  | pc |
| 70 | Plastic washer 20.1x41.8.4T                          | 1  | pc |
| 71 | Plastic bearing $\Phi 12.8 \times 21.4 \times 6.7$ T | 4  | pc |
| 72 | Plastic sleeve $\Phi 7.9 \times 12.7 \times 23.5$ mm | 2  | pc |
| 73 | Fixed plate  | 2  | pc |
| 74 | Cushion knob M10x25                                  | 4  | pc |
| 75 | Cap $\Phi 76$  | 4  | pc |
| 76 | Transport wheel $\Phi 70$                            | 2  | pc |
| 77 | Tension control knob M10                             | 1  | pc |
| 78 | Bolt M5x15   | 2  | pc |
| 79 | Axis $\Phi 25$ for belt wheel                        | 1  | pc |
| 80 | Self-tapping screw M4.5x25                           | 5  | pc |
| 81 | Trim cover for Chain cover                           | 2  | pc |
| 82 | Washer 12x25x1.5T                                    | 2  | pc |
| A  | Spanner (13, 15)                                     | 1  | pc |
| B  | Spanner (14, 17)                                     | 1  | pc |
| C  | Multi wrench (13, 14, 15)                            | 1  | pc |

# EXPLODED VIEW



# **TERMS AND CONDITIONS OF WARRANTY, WARRANTY CLAIMS**

## **General Conditions of Warranty and Definition of Terms**

All Warranty Conditions stated hereunder determine Warranty Coverage and Warranty Claim Procedure. Conditions of Warranty and Warranty Claims are governed by Act No. 40/1964 Coll. Civil Code, Act No. 513/1991 Coll., Commercial Code, and Act No. 634/1992 Coll., Consumer Protection Act, as amended, also in cases that are not specified by these Warranty rules.

The seller is SEVEN SPORT s.r.o. with its registered office in Borivojova Street 35/878, Prague 13000, Company Registration Number: 26847264, registered in the Trade Register at Regional Court in Prague, Section C, Insert No. 116888.

According to valid legal regulations it depends whether the Buyer is the End Customer or not.

“The Buyer who is the End Customer” or simply the “End Customer” is the legal entity that does not conclude and execute the Contract in order to run or promote his own trade or business activities.

“The Buyer who is not the End Customer” is a Businessman that buys Goods or uses services for the purpose of using the Goods or services for his own business activities. The Buyer conforms to the General Purchase Agreement and business conditions to the extent specified in the Commercial Code.

These Conditions of Warranty and Warranty Claims are an integral part of every Purchase Agreement made between the Seller and the Buyer. All Warranty Conditions are valid and binding, unless otherwise specified in the Purchase Agreement, in the Amendment to this Contract or in another written agreement.

## **Warranty Conditions**

### **Warranty Period**

The Seller provides the Buyer a 24 months Warranty for Goods Quality, unless otherwise specified in the Certificate of Warranty, Invoice, Bill of Delivery or other documents related to the Goods. The legal warranty period provided to the Consumer is not affected.

By the Warranty for Goods Quality, the Seller guarantees that the delivered Goods shall be, for a certain period of time, suitable for regular or contracted use, and that the Goods shall maintain its regular or contracted features.

### **The Warranty does not cover defects resulting from:**

User's fault, i.e. product damage caused by unqualified repair work, improper assembly, insufficient insertion of seat post into frame, insufficient tightening of pedals and cranks

Improper maintenance

Mechanical damages

Regular use (e.g. wearing out of rubber and plastic parts, joints etc.)

Unavoidable event, natural disaster

Adjustments made by unqualified person

Improper maintenance, improper placement, damages caused by low or high temperature, water, inappropriate pressure, shocks, intentional changes in design or construction etc.

## **Warranty Claim Procedure**

The Buyer is obliged to check the Goods delivered by the Seller immediately after taking the responsibility for the Goods and its damages, i.e. immediately after its delivery. The Buyer must check the Goods so that he discovers all the defects that can be discovered by such check.

When making a Warranty Claim the Buyer is obliged, on request of the Seller, to prove the purchase and validity of the claim by the Invoice or Bill of Delivery that includes the product's serial number, or eventually by the documents without the serial number. If the Buyer does not prove the validity of the Warranty Claim by these documents, the Seller has the right to reject the Warranty Claim.

If the Buyer gives notice of a defect that is not covered by the Warranty (e.g. in the case that the Warranty Conditions were not fulfilled or in the case of reporting the defect by mistake etc.), the Seller is eligible to

require a compensation for all the costs arising from the repair. The cost shall be calculated according to the valid price list of services and transport costs.

If the Seller finds out (by testing) that the product is not damaged, the Warranty Claim is not accepted. The Seller reserves the right to claim a compensation for costs arising from the false Warranty Claim.

In case the Buyer makes a claim about the Goods that is legally covered by the Warranty provided by the Seller, the Seller shall fix the reported defects by means of repair or by the exchange of the damaged part or product for a new one. Based on the agreement of the Buyer, the Seller has the right to exchange the defected Goods for a fully compatible Goods of the same or better technical characteristics. The Seller is entitled to choose the form of the Warranty Claim Procedures described in this paragraph.

The Seller shall settle the Warranty Claim within 30 days after the delivery of the defective Goods, unless a longer period has been agreed upon. The day when the repaired or exchanged Goods is handed over to the Buyer is considered to be the day of the Warranty Claim settlement. When the Seller is not able to settle the Warranty Claim within the agreed period due to the specific nature of the Goods defect, he and the Buyer shall make an agreement about an alternative solution. In case such agreement is not made, the Seller is obliged to provide the Buyer with a financial compensation in the form of a refund.



**SEVEN SPORT s.r.o.**

Bořivojova 35/878, 130 00, Praha 3, ČR

IČO: 26847264, DIČ: CZ26847264

Objednávky: +420 556 300 970 [objednavky@insportline.cz](mailto:objednavky@insportline.cz)

Reklamáce: +420 556 770 190, mobil: +420 604 853 019, [reklamace@insportline.cz](mailto:reklamace@insportline.cz)

Servis: +420 556 770 190, mobil: +420 604 853 019, [servis@insportline.cz](mailto:servis@insportline.cz)

Fax: +420 556 770 192, (servis +420 556 770 191)

Web: [www.insportline.cz](http://www.insportline.cz), [www.worker.cz](http://www.worker.cz), [www.worker-moto.cz](http://www.worker-moto.cz)



**inSPORTline s.r.o.:**

Električná 6471, 911 01 Trenčín, SK

IČO: 36311723, DIČ: SK2020177082

Objednávky: +421(0)326 526 701, +421(0)917 649 192, [objednavky@insportline.sk](mailto:objednavky@insportline.sk)

Reklamáce: +421(0)326 526 701, +421(0)918 408 519, [reklamacie@insportline.sk](mailto:reklamacie@insportline.sk)

Fax: +421(0)326 526 705

Web: [www.insportline.sk](http://www.insportline.sk), [www.worker.sk](http://www.worker.sk), [www.worker-moto.sk](http://www.worker-moto.sk)

Date of Sale:

Stamp and Signature of Seller: